

HITCH-MOUNTED VEHICLE LIFT SOLUTIONS



BE INDEPENDENT. BE CONFIDENT. BE INFORMED.



25.5 million Americans age 5 years and older have self-reported travel-limiting disabilities.



3.6 million Americans with travel-limiting disabilities do not leave their homes because they are disabled or housebound.



About 15% of the world's population live with a disability.

NEED A LIFT?

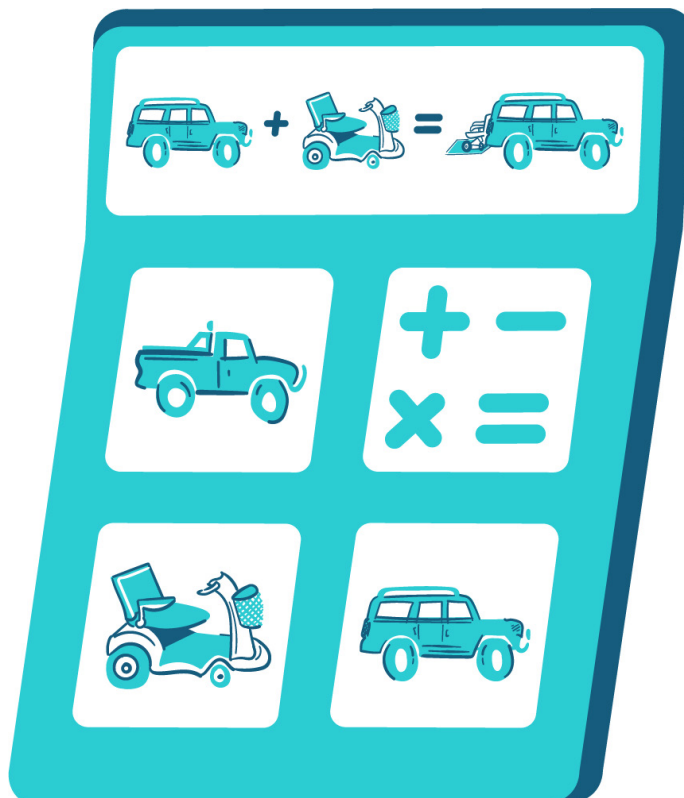
Having the freedom to bring your mobility device with you to the grocery store, beach, favorite park, or vacation is important. 25.5 million Americans 5 years and older have self-reported, travel-limiting disabilities. Traveling with a mobility device can be difficult without the right tools and can lead to many people living with a disability choosing to stay at home to avoid the hassle. With the help of a vehicle lift, you can reclaim your freedom and enjoy independent living.

Where
will you
GO first?

HOW TO SELECT A VEHICLE LIFT

Harmar vehicle lifts are designed to safely and effectively transport scooters, powerchairs, or manual wheelchairs either on the outside or inside your vehicle. We offer a broad selection of vehicle lifts to ensure you will find the appropriate lift for your needs based on your vehicle, potential hitch class, mobility device, and your physical capabilities.

This brochure will help you better understand which lift or lift type would work best for you; however, we suggest you meet with your local Authorized Harmar Dealer to ensure you purchase the best lift for your needs.



LIFT/VEHICLE COMPATIBILITY

Harmar lifts can fit compact to full-size cars, SUVs, vans, and trucks. While there are countless combinations from weight capacity, to space, hitch ratings and even door shapes, Harmar has a lift for almost any vehicle and mobility device!

USER CAPABILITIES

Harmar's vehicle lifts are designed to be either fully manual, partially automatic, or fully automatic securement and lifting to ensure you feel comfortable and confident while operating your new lift.

NARROWING YOUR CHOICES CAN BE EASY

We know - there's a lot to choose from, but we have a great tool to help you narrow down your choices. Use our Compatibility Calculator online by inputting your vehicle type and year and mobility device to get started. Please also follow up with your local authorized Harmar dealer.

HITCH-MOUNTED LIFTS FOR YOUR VEHICLE

The vehicle lift market might seem overwhelming – where do you start? Hitch-mounted lifts are fantastic choices when looking to save your vehicle’s cargo area while transporting your manual wheelchair, scooter, or powerchair.

Attaches via hitch class 1, 2, 3, or 5

- Actuator and platform
- Mobility device transported on the back of your vehicle
- Transports a variety of mobility devices including:
 - Scooters and travel scooters
 - Power wheelchairs and smaller powerchairs
 - Manual wheelchairs
 - All of the above (combination)

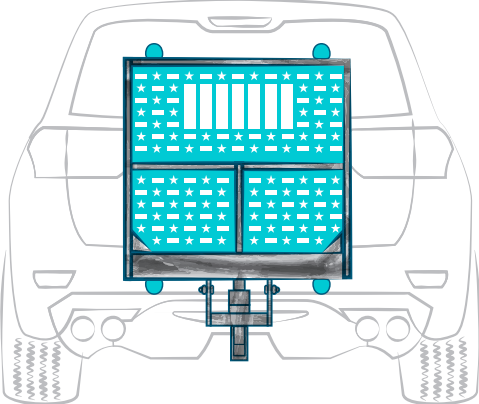


USER CAPABILITIES MUST INCLUDE:

- Walking from the front to the rear of the vehicle and back again
- Standing up to three minutes while the lift operates
- Steer or push the mobility device on/off the platform
- Fold down the seat back of the mobility device or scooter tiller until it is in its most compact position
- Insert the key and rotate it 90 degrees to turn on and activate the lift
- Apply pressure to hold the up/down toggle switch while the lift operates
- For Retractors: Connect the hook to location on mobility device and pull strap end or turn knob to increase tension (single and dual-hand retractors available)

ADVANTAGES OF HITCH-MOUNTED VEHICLE LIFTS

Easy Drive-On, Drive-Off



Exterior Storage Enables you to Keep Back Seating/Cargo Area

Heavy-Duty Lifting Capacity



SAY “BYE” TO BLOCKED BACKUP CAMERAS: MULTIVIEW BACKUP CAMERA

Hitch-mounted lifts are easy to use and allow you to maintain use of your cargo area – but have a habit of blocking backup cameras. The MultiView is an optional, small camera mounted on the hitch lift platform so you can enjoy both the convenience and ease of your hitch lift and use of a backup camera.



Camera lenses are fixed in two positions to automatically provide a clear view when the platform is stowed or deployed with a mobility device

Installed on the platform’s edge, out of the way from mobility device wheels



Lowered Platform



Raised Platform



In-vehicle display monitor provides a clear view behind the vehicle and lift

Convenient view from driver’s seat with a digital rearview mirror or a moveable auxiliary monitor



HITCH-MOUNTED LIFTS FOR SCOOTERS

Get going with your mobility scooter! Harmar has designed many high-quality lifts specifically tailored to help you conveniently travel with your scooter. With options ranging from up to 400 lb lifting capacities, you'll find your perfect fit with one of our lifts below.

NEW



AL100-DE

Need a little more power?

Check out the AL100-DE! This outside lift was designed for ease-of use with dual entry. The guide rails keep the scooter's third wheel centered when entering/exiting the platform - or position four-wheel scooters in the exact location for easy, consistent loading and unloading.

Lifting Capacity: 350 lb		Install Weight: 83 lb	
Platform Size:	- 28.6" x 56.7"	Hitch Class:	- II or greater
Securement:	- Automatic hold-down foot - Wheel chocks	Vertical Reach:	- 26" with appropriate hitch adapter
Included Accessories:	- AL107 hitch post - AL123 class III hitch adapter - License plate mount - Wheel chocks	Available Options:	- Battery pack - License plate riser - Retractable strap kit - Cover - Swing-away

AL100 Series

Make traveling with your scooter easy with the AL100 or AL100HD! Whether you need a simple lift or something with a little more lifting power, these hitch-mounted lifts will save you some transportation trouble and room in your vehicle's cargo area.

	AL100	AL100HD
Lifting Capacity:	350 lb	400 lb
Install Weight:	83 lb	84 lb
Hitch Class:	II or greater	III or greater
Platform Size:	- 26" x 39" adjustable cradle extends up to 46"	
Securement:	- Automatic hold-down foot - Rear wheel cradle	
Included Accessories:	- AL107 hitch post - AL123/AL123HD class III hitch adapter - License plate mount	
Vertical Reach:	- 26" with appropriate hitch adapter	
Available Options:	- Battery pack - Cover - License plate riser - Swing-away	



AL160

Where will you go first with the AL160 hitch-mounted lift? This outside lift is designed to transport your power scooter safely and securely without any modifications required to your mobility device.

Lifting Capacity: 350 lb	Install Weight: 74 lb
Platform Size:	- 25" x 25" adjustable cradle extends up to 33"
Securement:	- Automatic hold-down foot - Rear wheel cradle
Included Accessories:	- AL107 hitch post - AL123 class III hitch adapter - License plate mount
Hitch Class:	- I or greater
Vertical Reach:	- 26" with appropriate hitch adapter
Available Options:	- Battery pack - Cover - Swing-away



HITCH-MOUNTED LIFTS

LIFTS FOR POWERCHAIRS AND SCOOTERS

Whether you're off to the grocery store, a picnic at the park, or trekking around campsites in an RV, there's a lift sure to fit your needs! Where will you go first with your powerchair or scooter?

NEW



AL300-FULL

The AL300-FULL boasts a simple hitch-based installation, leaving minimal to no required modifications made to either the vehicle nor the mobility device. This lift's flexibility allows multiple securement options including the adaptable hold-down foot (scooters only), hold-down arm (powerchairs only), and Ratchet Straps (used alone or in combination with either the hold-down arm or hold-down foot).

Lifting Capacity: 350 lb		Install Weight: 73 lb	
Platform Size:	- 30.25" x 42"	Hitch Class:	- II or greater
Securement:	- Hold-down arm (Power chair only) - Hold-down foot (Scooter only) - Retractable strap kit - Wheel chocks	Vertical Reach:	- 26" with appropriate hitch adapter
Included Accessories:	- AL107 hitch post - AL123/AL123HD class III hitch adapter - License plate mount - Wheel chocks	Available Options:	- Battery Pack - Cover - Hold-down arm - Hold-down foot - License plate riser - Retractable strap kit - Swing-away



AL300 Series

Struggling with your scooter or powerchair is a thing of the past with the AL300 or AL300HD! This hitch-mounted lift series is here to help you hit the road and reclaim your freedom. The Stars-N-Stripes platform not only provides a patriotic embellishment, but also helps protect your mobility device from debris while on the road.

	AL300	AL300HD
Lifting Capacity:	350 lb	400 lb
Install Weight:	80 lb	82 lb
Hitch Class:	II or greater	III or greater
Platform Size:	- 26" x 39" adjustable cradle extends up to 46"	
Securement:	- 4 self-tensioning Q'Straint retractors - Rear wheel cradle	
Included Accessories:	- AL107 hitch post - AL123/AL123HD class III hitch adapter - License plate mount	
Vertical Reach:	- 26" with appropriate hitch adapter	
Available Options:	- Battery Pack - Cover - License plater riser - Swing-away	



AL300RV

Are you ready for an adventure? Easily bring your scooter or powerchair along! Designed specifically for RVs, the AL300RV can safely handle the added stress of your mobility device while on the road.

Lifting Capacity: 350 lb | **Install Weight: 82 lb**

Platform Size:	- 26" x 39" adjustable cradle extends up to 46"
Securement:	- 4 self-tensioning Q'Straint retractors - Rear wheel cradle
Included Accessories:	- AL107 hitch post - H300102 class III reinforced hitch adapter - License plate mount
Hitch Class:	- III or greater
Vertical Reach:	- 30" with appropriate hitch adapter
Available Options:	- Battery pack - Cover



AL301XL Series

Designed to lift the widest variety of powerchairs and scooters, the AL301XL and AL301XLHD is a premier choice to help make your travels easier! The adjustable wheel cradles and self-tensioning Q'Straint retractors will keep your larger mobility device safe and secure as you hit the road.

	AL301XL	AL301XLHD
Lifting Capacity:	350 lb	400 lb
Install Weight:	100 lb	102 lb
Hitch Class:	III or greater	III or greater
Platform Size:	- 36" x 39" adjustable cradle extends up to 53"	
Securement:	- 4 self-tensioning Q'Straint retractors - Front and rear wheel cradles	
Included Accessories:	- AL107 hitch post - AL123/AL123HD class III heavy duty hitch adapter - License plate mount	
Vertical Reach:	- 26" with appropriate hitch adapter	
Available Options:	- Battery pack - Cover - License plate riser - Swing-away	

WARRANTY



Harmar's 3-Year Transferable Warranty is flexible for whatever life brings your way. Should you need to switch the lift to another vehicle or sell it to another user – the warranty lasts 3 years from the date of installation. The warranty covers the cost of parts.

HITCH-MOUNTED LIFTS

LIFTS FOR MANUAL WHEELCHAIRS

Perhaps you need something simple for your manual wheelchair. Harmar has your back. Our manual folding wheelchair lifts are great for transporting manual chairs 100 lb or less.



AL003

Do you need a lighter lift for your manual wheelchair? Compatible with sedans, minivans, SUVs, vans, and trucks, these sturdy, compact hitch-mount lifts are optimal for helping you transport your wheelchair with ease.

Lifting Capacity: 100 lb	Install Weight: 25 lb
Platform Size:	- 14" x 30"
Securement:	- Manual hold-down arm - Wheel cradle
Included Accessory:	- Ball mount
Hitch Class:	- I or greater
Vertical Reach:	- 18"
Available Option:	- Cover



AL030

Take control and go where you want, when you want with the lightweight power tote AL030. Designed specifically to carry manual wheelchairs, this lift enables users to easily roll wheelchairs on and off the device for easy transportation.

Lifting Capacity: 100 lb	Install Weight: 49 lb
Platform Size:	- 14" x 30"
Securement:	- Manual hold-down arm - Wheel cradle
Included Accessories:	- Ball mount - License plate mount
Hitch Class:	- I or greater
Vertical Reach:	- 26" with appropriate hitch adapter
Available Options:	- Battery pack - Cover - Swing-away

HITCH-MOUNTED LIFTS

LIFTS FOR POWERCHAIRS

Do you need more power to transport your powerchair? This group of mobility lifts is designed to lift a range of powerchair sizes, offering lifting capacities from 350 to 450 lb. Which will best suit your travel needs?

AL500 Series

Do you need more power to transport your mobility device? The AL500 and AL500HD are designed to carry virtually all powerchairs without any modifications to your chair during travel.

	AL500	AL500HD
Lifting Capacity:	350 lb	400 lb
Install Weight:	75 lb	77 lb
Hitch Class:	II or greater	III or greater
Platform Size:	- 26" x 39"	
Securement:	- 4 self-tensioning Q'Strain retractors	
Included Accessories:	<ul style="list-style-type: none"> - AL107 hitch post - AL123/AL123HD class III heavy duty hitch adapter - License plate mount 	
Vertical Reach:	- 26" with appropriate hitch adapter	
Available Options:	<ul style="list-style-type: none"> - Battery pack - Cover - License plate riser - Swing-away 	



AL560 Series

Simple, and practically hands-free securement! Harmar understands the importance of having quick, easy securement for your powerchair when on-the-go. The padded hold-down arm keeps your powerchair secured during travel without requiring any modifications to your mobility device.

	AL560	AL560XL
Lifting Capacity:	350 lb	350 lb
Install Weight:	89 lb	101 lb
Hitch Class:	III or greater	III or greater
Platform Size:	- 26.25" x 38.5" adjustable platform	
Securement:	<ul style="list-style-type: none"> - Padded hold-down arm - Wheel cradles 	
Included Accessories:	<ul style="list-style-type: none"> - AL107 hitch post - AL123/AL123HD class III hitch adapter - License plate mount 	
Vertical Reach:	- 26" with appropriate hitch adapter	
Available Options:	<ul style="list-style-type: none"> - Battery pack - Cover - Swing-away 	



AL580 Series

Compact, durable, and ready to help you go where you want, when you want! Complete with an automatic securement feature (the padded hold-down bar) the AL580 and AL580XL are designed to safely and securely transport virtually any mid-wheel drive powerchair.



	AL580	AL580XL
Platform Size:	16.5" x 27"	17.5" x 27"
Lifting Capacity:	- 350 lb	
Install Weight:	- 63 lb	
Hitch Class:	- II or greater	
Securement:	<ul style="list-style-type: none"> - Padded hold-down arm - Wheel cradle 	
Included Accessories:	<ul style="list-style-type: none"> - AL107 hitch post - AL123 class III hitch adapter - License plate mount 	
Vertical Reach:	- 26" with appropriate hitch adapter	
Available Options:	<ul style="list-style-type: none"> - Battery pack - Cover - License plate riser - Swing-away 	

AL580-HDX

Need a little more power to lift your heavier mid-wheel powerchair? Harmar has you covered. Our AL580-HDX is designed to transport nearly any heavy mid-wheel powerchairs with wheel sizes ranging from 10" to 14"!



	Lifting Capacity: 450 lb	Install Weight: 92 lb
Platform Size:	<ul style="list-style-type: none"> - 23" x 33" footprint - 27" wide usable space 	
Securement:	<ul style="list-style-type: none"> - 4 self-tensioning Q'Strain retractors - Padded hold-down arm - Wheel cradle 	
Included Accessories:	<ul style="list-style-type: none"> - AL107 hitch post - AL123HD class III heavy duty hitch adapter - License plate mount 	
Hitch Class:	- III or greater	
Vertical Reach:	- 26" with appropriate hitch adapter	
Available Options:	<ul style="list-style-type: none"> - Battery pack - Cover - License plate riser - Swing-away 	

HITCH-MOUNTED LIFTS

FUSION LIFTS AND LIFTS FOR TRAVEL SCOOTERS AND MICRO POWERCHAIRS

Plan ahead with Harmar’s versatile fusion lift, the AL001! Designed to carry scooters, manual wheelchairs, and powerchairs, this powerhouse lift has a lifting capacity up to 500 lb, making it ideal for heavier-duty chairs. Or travel light with your small scooter or smaller powerchair with our AL010, AL015, or AL050, created specifically for your travel mobility device.



AL001

Designed to transport scooters, manual wheelchairs, and powerchairs, this powerhouse lift offers a carrying capacity up to 500 lb! Virtually any mobility device fits on the oversized platform with no required modifications to your chair.

Lifting Capacity:	500 lb	Install Weight:	84 lb
Platform Size:	- 28" x 48" platform with a 60" folding ramp		
Powered:	- Manual		
Included Accessory:	- Class III adapter		
Hitch Class:	- II or III		
Vertical Reach:	- 25"		
Available Options:	- Cover - Tie-down straps		



AL015

We understand that every situation is unique, which is why our AL015 universal micro scooter lift is a great choice. Optimal for scooters with a wheelbase up to 36", the AL015 can accommodate a three-wheel scooter, or you can choose an additional wheel cradle to bring your scooter on virtually any outing.

Lifting Capacity:	150 lb
Install Weight:	- 65 lb (3-wheel cradle standard) - 70 lb (4-wheel cradle option)
Platform Size:	- 22.5" x 40"
Securement:	- Automatic hold-down foot - Front and rear wheel cradle
Included Accessories:	- AL107 hitch post - AL126 class II adapter - License plate mount
Hitch Class:	- I or greater
Vertical Reach:	- 26" with appropriate hitch adapter
Available Options:	- Battery pack - Cover - Swing-away - 4-wheel cradle



AL010/AL050

Traveling with a mobility scooter doesn't have to be difficult. The AL010 micro outside lift is a lighter, prime choice to help you bring your compact scooter wherever life brings you. Simply anchor your scooter with the securement straps and adjustable wheel cradle and enjoy your freedom.

	AL010	AL050
Install Weight:	71 lb	67 lb
Securement:	4 cam buckle straps Rear wheel cradle	4 cam buckle straps
Platform Size:	23.5" x 33" adjustable wheel cradle extends up to 42.25"	23.5" x 33"
Lifting Capacity:	- 135 lb	
Powered:	- Manual fold - Power lifting	
Included Accessories:	- AL107 hitch post - AL126 class II adapter - License plate mount	
Hitch Class:	- I or greater	
Vertical Reach:	- 26" with appropriate hitch adapter	
Available Options:	- Battery pack - Cover - License plate riser - Swing-away	

VEHICLE LIFT SECUREMENT SYSTEMS



HOLD-DOWN ARM

Pull T-handle and swing arm into position with one hand; reverse process for unloading.



AUTOMATIC HOLD-DOWN FOOT

Requires no additional assistance – simply use the lift's remote control to secure your scooter.



TIE-DOWN STRAPS

Pull strap end to connect the hook to the mobility device. Pull strap end to increase tension.



Q'STRAIT RETRACTORS

Pull strap end to connect hook to the mobility device. Twist knob to increase tension and tighten straps.



Based in Sarasota, FL, Harmar is a leading manufacturer of stairlifts, vertical platform lifts, and wheelchair and scooter lifts for automobiles. Inspired by those with limited physical mobility, we are driven to create mobility and accessibility products that allow people to go where they want, when they want, and how they want.

Founded in 1998, we continue our mission of innovation to increase independence and improve the quality of life for millions of people who are mobility-challenged. We constantly strive to evolve and update our product lines to accommodate our growing clientele.

Do you have a mobility device but don't know how to take it with you on your errands? Scooters, manual wheelchairs, and powerchairs can be difficult to get into your vehicle's cargo area without extra assistance.

Enjoy your independence taking your wheelchair, powerchair, or scooter along for the ride while stowing it inside your vehicle. Harmar offers a variety of mobility solutions to match up with the wide range of vehicles, scooters & wheelchairs and personal capabilities. Whether a hitch-mounted (outside), hoist (inside), or hybrid (inside platform) lift will better fit your needs, Harmar is sure to have a lift to best fit your lifestyle to help you enjoy your freedom.

THE HARMAR DIFFERENCE

We believe in supporting you on your journey. Our products are proudly designed and assembled here in the U.S. to help you and your loved ones enjoy freedom, independence, and dignity.



FIRST-RATE CUSTOMER SERVICE AND SUPPORT

We stand behind our products to ensure your safety and happiness with your lift. Harmor offers the best support in the industry with our LiftSquad service network, training and support. Our 3-year transferable warranty provides flexibility.

SAFETY & TESTING

All of Harmor's products are subject to intense testing including monitoring their load-bearing capacity by subjecting the product to several times its rated load and life-cycle testing at or above industry standards. We take pride in knowing that our products exceed quality expectations and are more than ready to lift your life in multiple ways.

COMPREHENSIVE DEALER & SERVICE NETWORK

Harmor has thousands of dealer locations across North America, which helps make our products available when and where you need them. To ensure you're choosing the best lift possible for your needs, our dealers provide assessment services, installation, and routine maintenance and service.



Harmar
1500 Independence Blvd., Suite 220
Sarasota, FL 34234
800-833-0478
www.harmar.com

